

ANC 6B

Capitol Hill / Southeast

January 21, 2021

921 Pennsylvania Avenue SE
Washington, DC 20003-2141
6B@anc.dc.gov

Marnique Heath, Chair
Historic Preservation Review Board
1100 4th Street SW, Suite E650
Washington, DC 20024

OFFICERS

Chairperson

Brian Ready

Vice-Chair

Steve Holtzman

Secretary

Jerry Sroufe

Treasurer

Corey Holman

Parliamentarian

Kirsten Oldenburg

COMMISSIONERS

SMD 01 Jennifer Samolyk

SMD 02 Jerry Sroufe

SMD 03 Brian Ready

SMD 04 Kirsten Oldenburg

SMD 05 Steve Holtzman

SMD 06 Corey Holman

SMD 07 Edward Ryder

SMD 08 Peter Wright

SMD 09 Alison Horn

SMD 10 Denise Krepp

VIA E-MAIL: historic.preservation@dc.gov

RE: HPA 21-132: 921 G St SE; Third story addition, dogleg infill

Dear Chairperson Heath:

At a regularly scheduled, properly noticed, meeting on September 8, 2020, with a quorum present, Advisory Neighborhood Commission (ANC) 6B voted 10-0-0 to support the applicant's above-referenced request as long as the following issues are addressed by the board.

- 1) ANC 6B is concerned about the high visibility of the addition from 10th Street SE. The design elements presented to the ANC on page A-114 from plans dated January 8, 2021 lessen the impact of the size of the addition by including detailing which lessens the impact by being in character with the current existing rear and side elevations
- 2) ANC 6B asks to board to consider the rear elevation, including fenestration and window design, with a focus on ensuring its compatibility with the surrounding context. The plans presented to the ANC on pages A-112 and A-114 were too bold for such a highly visible addition from a side street and alley.

(ANC 6B notes that we the plan set we reviewed is the same set on HPO's project plans Box drive titled *921 G St. SE Updated Concept Package 04compressed.pdf*. We have attached the relevant pages to this letter)

ANC 6B believes that, with proper consideration by the Board, that the design elements and building envelope of the project are generally consistent with Historic Preservation law, regulation, and guidelines.

Please contact Commissioner Corey Holman, ANC 6B's Planning and Zoning (P&Z) Committee Chair, at 301-664-4132 or 6b06@anc.dc.gov if you have questions or need further information.

Sincerely,



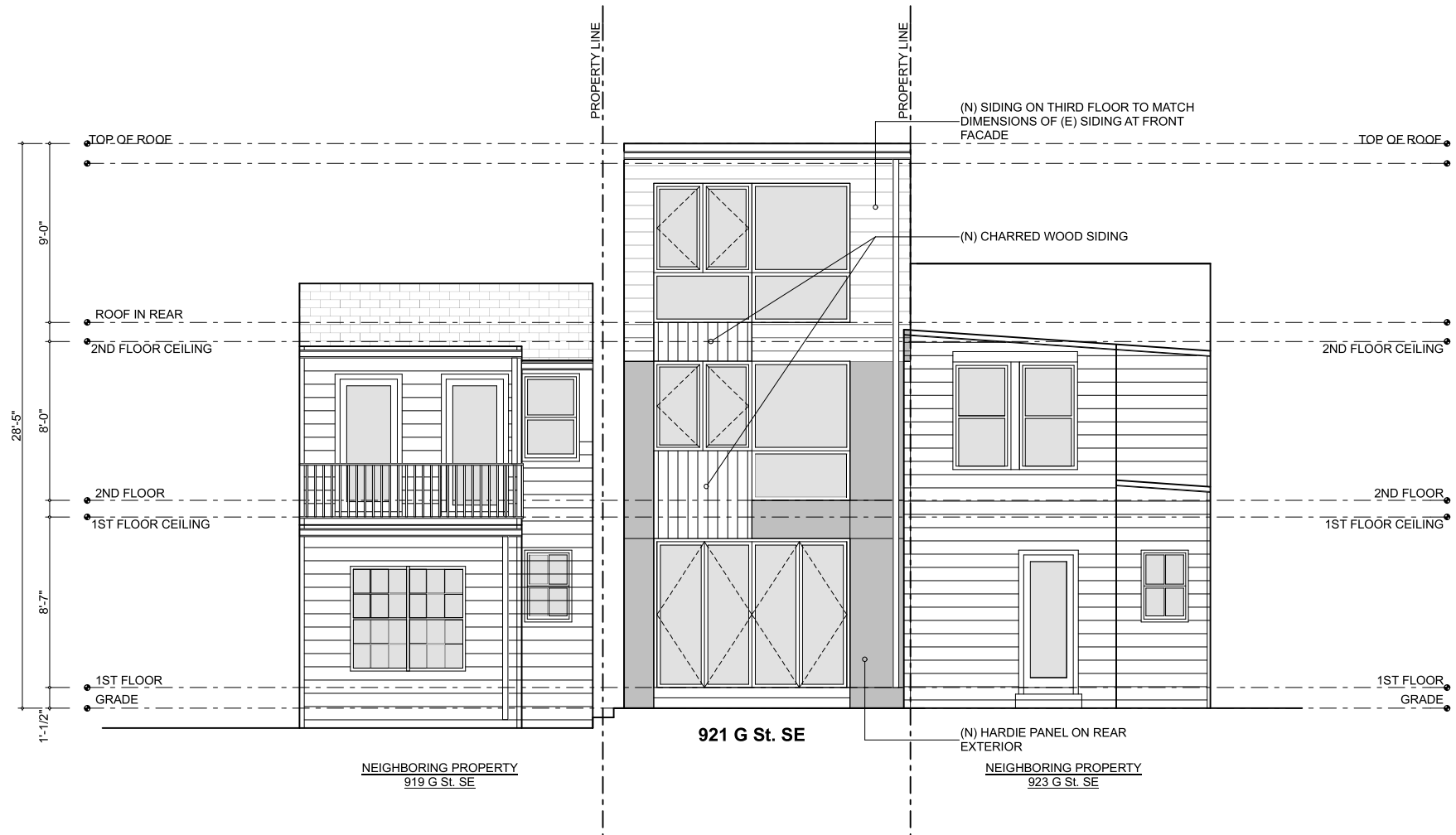
Brian Ready
Chair, ANC 6B

cc via e-mail:

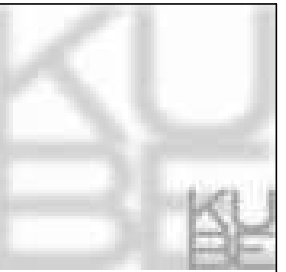
Owner / Architect:	Rich Loosle
P&Z Committee Chair:	Corey Holman
SMD Commissioner:	Kirsten Oldenburg



1
A-112 Rear Elevation: Existing
SCALE: 1/4" = 1'-0"



1
A-112 Rear Elevation: Proposed
SCALE: 1/4" = 1'-0"



KUBE architecture

818 18th St. NW
Suite 600
Washington DC 20006
202.986.0573

Drawn By: MD
Checked By: RL

01	12.18.20	HPRB
02	01.08.20	ANC Commission Meeting

**SIEMER
RESIDENCE**
921 G St. SE
Washington DC 20003

A-112
Rear Elevations



KUBE architecture

818 18th St. NW
Suite 600
Washington DC 20006
202.986.0573

Drawn By: MD
Checked By: RL

02	01.08.20	ANC Commission Meeting

**SIEMER
RESIDENCE**
921 G St. SE
Washington DC 20003



1 Existing view from 10th St. SE (Lumber Mock-Up Shown)
A-114 SCALE: 1:3.25



1 Proposed View from 10th St. SE
A-114 SCALE: 1:3.27

A-114
Side View Renderings